



Indoor Optical Cable Solution

FiberHome Telecommunication Technologies Co., Ltd.

ADD: No.6, Gaoxin 4th Road, East Lake High-tech Development Zone, Wuhan City, Hubei 430205, China
TEL: +86-27-87693756 (workday) HTTP: www.fiberhome.com E-mail: support@fiberhome.com

Copyright (C) 2018 FiberHome Telecommunication Technologies Co., Ltd. All Rights Reserved.

FiberHome Telecommunication Technologies Co., Ltd.



FiberHome Technologies

FiberHome Technologies Group is a leading equipment vendor and a global solution provider in the field of information technology and telecommunications. This high-tech enterprise is directly affiliated to the State-owned Assets Supervision and Administration Commission of the State Council. It is also the largest enterprise located in the Optics Valley, Wuhan, China. FiberHome Technologies Group was established in 1974. After continuous and intensive development for over 40 years, its business has been extended to R&D, manufacturing, marketing & sales, and engineering service in 4 major areas: fiber-optic communications, data networking communications, wireless communication, and intelligent applications. In particular, it has been providing end-to-end solutions integrated with opto-electronic devices, optical preforms, fiber & cables, and optical communication systems to many countries around the world.



CONTENTS

Application

Application Scenarios of Indoor Optical Cable 03

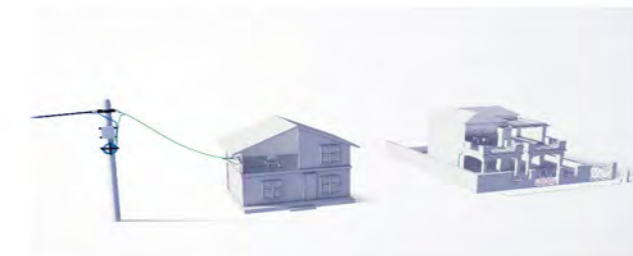
Outdoor Distribution Cable

Unitube 07
 Flat Unitube 08
 Figure-8 Unitube 09
 ASU Cable 10
 Outdoor Micro Tube Cable 11
 Air Blown Micro Cable 12



Drop Cable

Self-supporting Bow Type Cable 15
 Round Type Drop Cable 16
 Figure-8 Round Type Cable 17
 Flexible Armored Cable 18
 Invisible Cable 21
 Low-friction Bow Type Cable 22



Wiring Cable

Indoor Micro Tube Cable 25
 Breakout Cable 26
 Tight Buffer Distribution Cable 27
 Mini Simplex Unit Distribution Cable 28



Appendix

Typical Application 29
 Symbols 32
 Reference Standards 33
 Clients 34



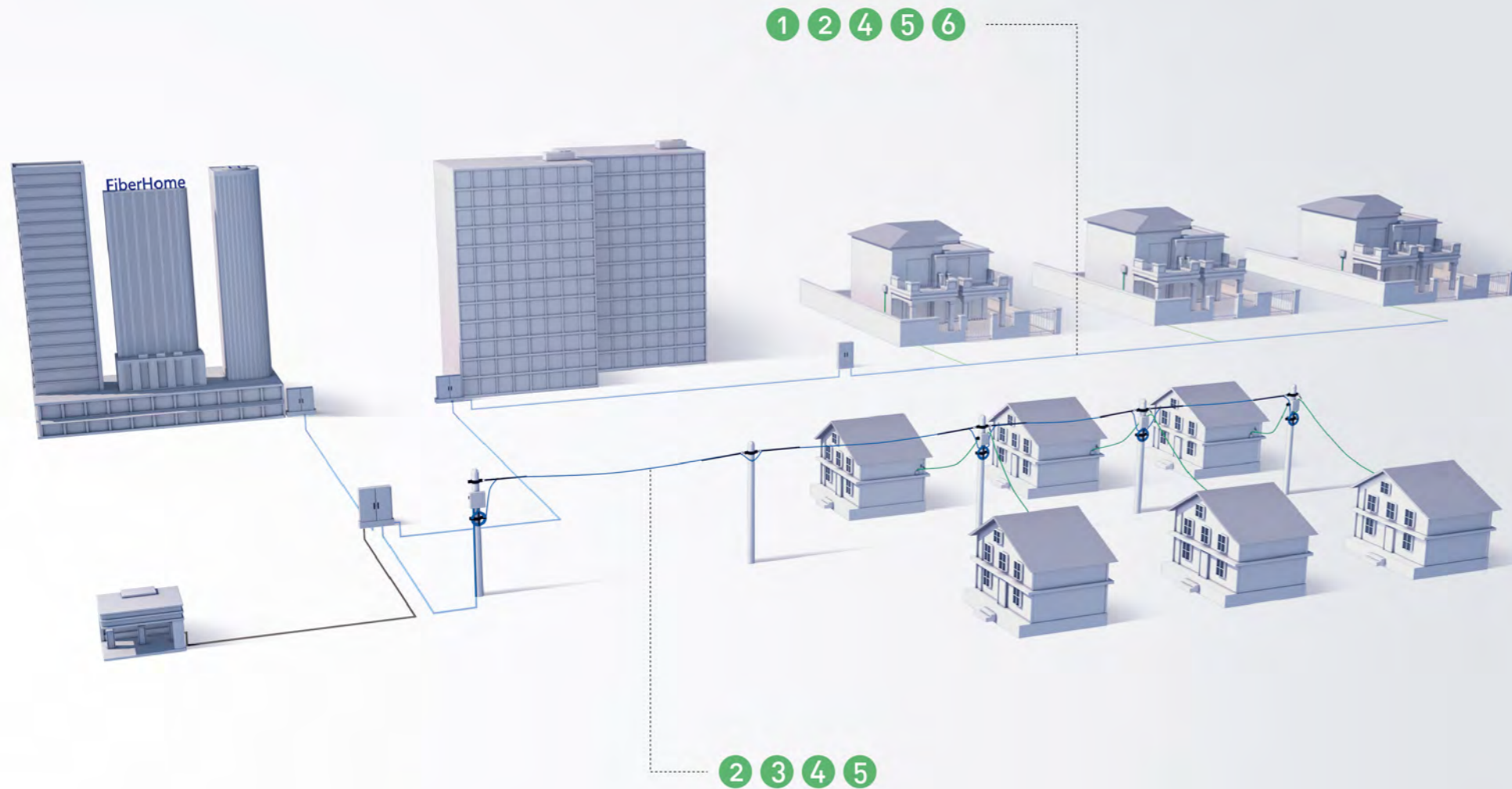
Application Scenarios of Indoor Optical Cable

FiberHome indoor optical cables are applicable to the link from outdoor-indoor distribution to indoor wiring, such as villas, apartments, office buildings, commercial complex, high density residential quarters, etc.

In each application field, FiberHome can provide smart and convenient products to meet different demands of users for diversified application. With the outstanding performance, the products are easy to install and friendly to the environment, which can reduce the construction cost and maintain superior network reliability.

Application

Outdoor Distribution Cable



1 Unitube



2 Flat Unitube



3 Figure-8 Unitube



4 ASU Cable



5 Outdoor Micro Tube Cable



6 Air Blown Micro Cable



Unitube

Flat Unitube



Features

- Max. core: 24
- Small outer diameter, high fiber density
- UV resistant, water blocking
- Superior mechanical and environmental performance
- Flame retardant, low smoke, non-toxic
- Dielectric, anti-electromagnetic interference



Applications

- Duct installation
- Indoor access



Installation performance

- Min. bend radius: installation 20D, operation 10D
- Temperature range: storage -40~+70°C, installation -10~+50°C, operation -20°C~+70°C



Eco-friendly



Flame Retardant



Water Blocking



Anti-lightning Strike



Duct



Last-mile Connection

• Products can be customized, included but not limited to the above



Features

- Max. core: 24
- Small volume, light weight
- Water blocking, all dielectric, anti-lightning strike, and anti- electromagnetic interference
- Easy strip, convenient construction and maintenance, various installation methods
- Superior mechanical and environmental performance



Applications

- Aerial installation
- Duct installation
- Indoor access



Installation performance

- Min. bend radius: installation 50H, operation 25H
- Temperature range: storage -40~+70°C, installation -20~+60°C, operation -40°C~+70°C



Easy Strip



Hi-crush



Water Blocking



Anti-lightning Strike



Aerial



Duct



Last-mile Connection

• Products can be customized, included but not limited to the above

Figure-8 Unitube

ASU Cable



Features

- Max. core: 24
- Water blocking, superior mechanical and environmental performance
- Supporting various accessories
- Easy strip, easy maintenance



Applications

- Aerial installation
- Indoor access



Installation performance

- Min. bend radius: installation 30W, operation 15W
- Temperature range: storage -40~+70°C, installation -10~+50°C, operation -20°C~+70°C



Easy Strip



Water Blocking



Aerial



Last-mile Connection

• Products can be customized, included but not limited to the above



Features

- Max. core: 12
- Small volume, light weight, stable structure
- All dielectric, anti-lightning strike, anti-electromagnetic interference
- Superior mechanical and environmental performance



Applications

- Aerial installation
- Duct installation
- Indoor access



Installation performance

- Min. bend radius: installation 20D, operation 10D
- Temperature range: storage -40~+70°C, installation -20~+60°C, operation -40°C~+70°C



Hi-crush



Water Blocking



Anti-lightning Strike



Aerial



Duct



Last-mile Connection

• Products can be customized, included but not limited to the above

Outdoor Micro Tube Cable



Features

- Small volume, light weight
- Easy strip, effective mid-span access, efficient construction
- Water blocking, superior bending performance
- Superior mechanical and environmental performance



Applications

- Aerial installation
- Duct installation
- Indoor access



Installation performance

- Min. bend radius: installation 20D, operation 10D
- Temperature range: storage -40~+70°C, installation -10~+50°C, operation -20°C~+70°C



Easy Strip



Hi-crush



Water Blocking



Aerial



Duct



Last-mile Connection

• Products can be customized, included but not limited to the above

Air Blown Micro Cable



Features

- Max. core: 24
- Small volume, light weight
- Low friction, high air blowing efficiency
- Easy strip, easy installation, easy upgrading and easy maintenance



Applications

- Air-blow installation
- Indoor access



Installation performance

- Min. bend radius: installation 30D, operation 15D
- Temperature range: storage -20~+60°C, installation -5~+40°C, operation -20°C~+60°C



Easy Strip



Low Friction



Anti-lightning Strike



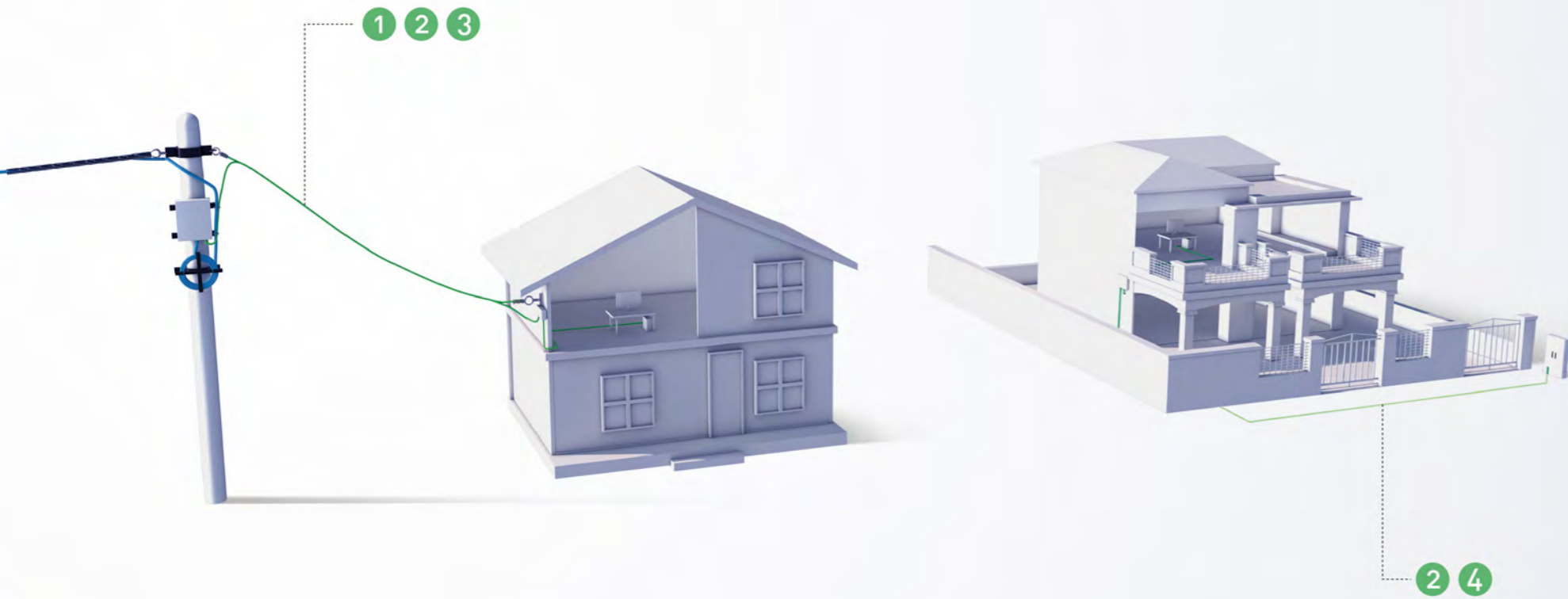
Air Blowing



Last-mile Connection

• Products can be customized, included but not limited to the above

▼ Drop Cable



1 Self-supporting Bow Type Cable



2 Round Type Drop Cable



3 Figure-8 Round Type Cable



4 Flexible Armored Cable



Self-supporting Bow Type Cable

Round Type Drop Cable



Features

- Light weight, stable structure
- Superior bending resistance and mechanical performance
- Easy strip, field patch cord compatibility
- Supporting various accessories



Applications

- Aerial installation
- Indoor access



Installation performance

- Min. bend radius: installation 30H, operation 15H
- Temperature range: storage -40~+70°C, installation -10~+50°C, operation -40°C~+70°C



Flexible



Easy Strip



Eco-friendly



Flame Retardant



Aerial



Pre-connect



Fast Connector

• Products can be customized, included but not limited to the above



Features

- Light weight, small diameter
- Field patch cord compatibility
- Bending resistant, pressure resistant, weather ability
- Flame retardant, low smoke, non-toxic
- For regions with harsh environment



Applications

- Aerial installation
- Duct installation
- Emergency connect



Installation performance

- Min. bend radius: installation 20D, operation 10D
- Temperature range: storage -20~+60°C, installation -10~+40°C, operation -20°C~+60°C



Flexible



Abrasion Resistance



Hi-crush



Eco-friendly



Flame Retardant



Aerial



Duct



Pre-connect



Fast Connector

• Products can be customized, included but not limited to the above

Figure-8 Round Type Cable

Flexible Armored Cable



Features

- Light weight, stable structure
- Superior bending feature and mechanical performance
- Flame retardant, low smoke, non-toxic
- Field patch cord compatibility



Applications

- Aerial installation
- Indoor access



Installation performance

- Min. bend radius: installation 30W, operation 15W
- Temperature range: storage -20~+70°C, installation -10~+50°C, operation -10°C~+70°C



Flexible



Easy Strip



Eco-friendly



Flame Retardant



Aerial



Pre-connect

• Products can be customized, included but not limited to the above



Features

- Superior pressure resistant and anti-rodent
- Superior bending performance
- Flame retardant, low smoke, non-toxic
- Both outdoor and indoor installation
- Field patch cord compatibility



Applications

- Anti-rodent
- High pressure environment
- Duct installation
- Indoor access



Installation performance

- Min. bend radius: installation 20D, operation 10D
- Temperature range: storage -20~+60°C, installation -5~+40°C, operation -10°C~+50°C



Flexible



Hi-crush



Eco-friendly



Flame Retardant



Rodent Protection



Duct



Indoor



Fast Connector



Last-mile Connection

• Products can be customized, included but not limited to the above

Drop Cable



1 Invisible Cable



2 Low-friction Bow Type Cable



Invisible Cable



Features

- Small volume, light weight
- Flame retardant, low smoke, non-toxic
- Visually invisible
- Easy strip
- Field patch cord compatibility
- Superior bending performance



Applications

- Indoor surface wiring along the wall, slot, ceiling, door frame and corners



Installation performance

- Min. bend radius: installation 30H, operation 15H
- Temperature range: storage -20~+60°C, installation -5~+40°C, operation -10°C~+60°C



Easy Strip



Eco-friendly



Flame Retardant



Fast Connector



Indoor

• Products can be customized, included but not limited to the above

Low-friction Bow Type Cable



Features

- Small volume, light weight
- Flame retardant, low smoke, non-toxic
- Low friction
- Field patch cord compatibility



Applications

- Indoor installation



Installation performance

- Friction coefficient ≤ 0.25
- Min. bend radius: installation 30H, operation 15H
- Temperature range: storage -20~+60°C, installation -5~+40°C, operation -10°C~+60°C



Low Friction



Easy Strip



Eco-friendly



Flame Retardant



Pre-connect



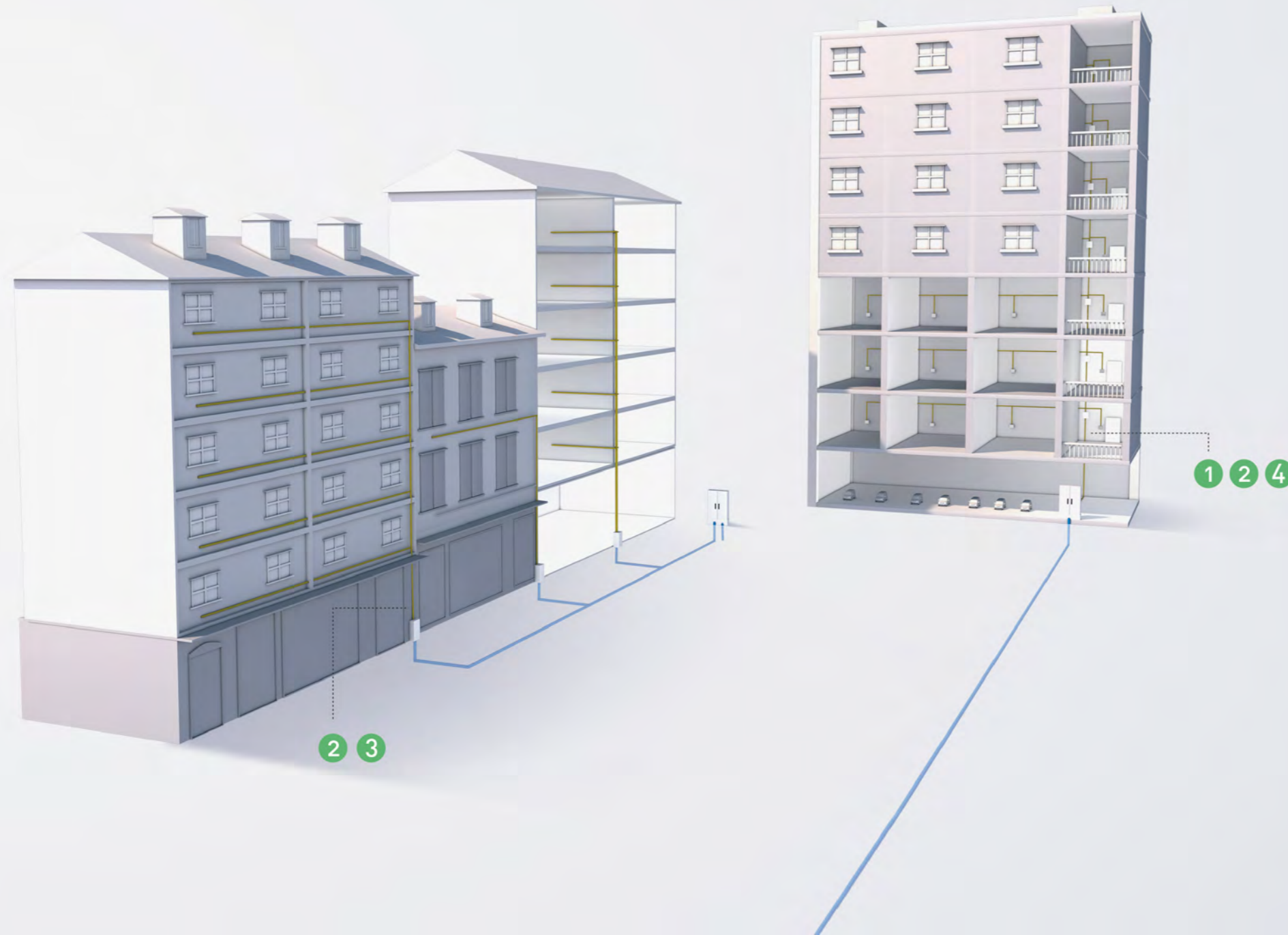
Fast Connector



Indoor

• Products can be customized, included but not limited to the above

Wiring Cable



1 Indoor Micro Tube Cable



2 Breakout Cable



3 Tight Buffer Distribution Cable



4 Mini Simplex Unit Distribution Cable



Indoor Micro Tube Cable

Breakout Cable



Features

- Max. core: 288
- Small volume, light weight, high fiber density
- Thin sheath of module unit, minimum oil filling, easy install
- Tool-free stripping, suitable for terminal connection and mid-span branching
- Flexible, easy coiled in the floor distribution box
- Flame retardant, low smoke, non-toxic
- Suitable for high temperature environment



Applications

- Indoor installation
- Data center



Installation performance

- Min. bend radius: installation 20D, operation 10D
- Temperature range: storage -20~+60°C, installation -5~+40°C, operation -10°C~+60°C



Flexible



Easy Strip



Eco-friendly



Flame Retardant



Water Blocking



Anti-lightning Strike



Indoor

• Products can be customized, included but not limited to the above



Features

- Max. core: 48
- Compact and stable structure
- Flame retardant, low smoke, non-toxic
- All dielectric, anti-lightning strike, and anti-electromagnetic interference
- Superior mechanical and environmental performance
- Easy install, easy mid-span access, sub-cable separate independent



Applications

- Indoor installation



Installation performance

- Min. bend radius: installation 20D, operation 10D
- Temperature range: storage -20~+60°C, installation -5~+40°C, operation -10°C~+60°C



Eco-friendly



Flame Retardant



Anti-lightning Strike



Pre-connect



Indoor

• Products can be customized, included but not limited to the above

Tight Buffer Distribution Cable



Features

- Max. core: 144
- Small volume, compact structure
- Flame retardant, low smoke, non-toxic
- All dielectric, anti-lightning strike, and anti- electromagnetic interference
- Superior mechanical and environmental performance
- Suitable for restricted area installation
- Easy install



Applications

- Indoor installation
- Data center



Installation performance

- Min. bend radius: installation 20D, operation 10D
- Temperature range: storage -20~+60°C, installation -5~+40°C, operation -10°C~+60°C



Eco-friendly



Flame Retardant



Anti-lightning Strike



Pre-connect



Indoor



Data Center

• Products can be customized, included but not limited to the above

Mini Simplex Unit Distribution Cable



Features

- Small volume, light weight
- Flame-resistant, low smoke, non-toxic
- Easy install, easy mid-span access, sub-unit separate independent
- Flexible, easy coiled in the floor distribution box



Applications

- Indoor installation



Installation performance

- Min. bend radius: installation 20D, operation 10D
- Temperature range: storage -20~+60°C, installation -5~+40°C, operation -10°C~+60°C



Flexible



Easy Strip



Eco-friendly



Flame Retardant



Pre-connect



Indoor

• Products can be customized, included but not limited to the above

Typical Application

Outdoor Distribution Cable

Products

Unitube
Flat Unitube
Figure-8 Unitube
ASU Cable
Outdoor Micro Tube Cable
Air Blown Micro Cable

Countries

Germany, Netherlands, Egypt, Saudi Arabia, Colombia, Oman
Canada, Colombia, Vietnam, Saudi Arabia, Argentina
Philippines, Brazil, Mexico, Indonesia, Brunei, Vietnam, Georgia, Peru
Jordan, Russia, Indonesia, Colombia
Belarus, France, Kenya, Colombia
Netherlands, Egypt, Kenya, France, Thailand



Drop Cable

Products

Self-supporting Bow Type Cable
Round Type Drop Cable
Figure-8 Round Type Cable
Flexible Armored Cable
Invisible Cable
Low-friction Bow Type Cable

Countries

Philippines, Bolivia, Thailand, Iraq, Uruguay, Vietnam
Colombia, Uruguay, Brazil, Kenya, Argentina
Thailand, Mexico, Ecuador, Argentina, Philippines, Paraguay
Ecuador, Indonesia, Kenya, Colombia, Philippines, Thailand
Thailand, Indonesia, Philippines, Malaysia, Colombia, China, Peru
Vietnam, Argentina, Kenya, Colombia, Malaysia, Peru



Typical Application

Wiring Cable

Products

Indoor Micro Tube Cable
 Breakout Cable
 Tight Buffer Distribution Cable
 Mini Simplex Unit Distribution Cable

Countries

Argentina, Spain, France, Peru, Singapore, Uzbekistan
 Indonesia, Philippines, Turkey
 Philippines, Colombia, Poland, Turkey, Gambia, Panama, Sri Lanka, Hungary
 India, Malaysia, Vietnam, Colombia



Symbols

Cable Cross Section



Application



Indoor



Data Center



Last-mile Connection

Installation



Duct



Aerial



Air Blowing



Pre-connect



Fast Connector

Features



Flexible



Easy Strip



Abrasion Resistance



Hi-crush



Low Friction



Eco-friendly



Flame Retardant



Water Blocking



Anti-lightning Strike



Rodent Protection

Reference Standards

GR-409-CORE	Generic Requirements for Indoor Fiber Optic Cable
ANSI/ICEA S-83-596 (ICEA 596)	Standard for Indoor Optical Fiber Cable
ANSI/ICEA S-104-696 (ICEA 696)	Standard for Indoor-outdoor Optical Fiber Cable
ANSI/ICEA S-110-717 (ICEA 717)	Standard for Optical Fiber Drop Cable
ANSI/ICEA S-115-730 (ICEA 730)	Standard for Multi-dwelling Unit (MDU) Optical Fiber Cable
IEC 60794-2-21	Optical Fiber Cables- Part 2-21: Indoor Optical Fiber Cables - Detailed Specification for Multi-fibre Optical Distribution Cables for Use in Premises Cabling
IEC 60794-2-22	Optical Fiber Cables- Part 2-22: Indoor Cables - Detail Specification for Multi-simplex Breakout Optical Cables to be Terminated with Connectors
UL 1581	Reference Standard for Electrical Wires, Cables, and Flexible Cords
IEC 60332	Tests on Electric and Optical Fibre Cables under Fire Conditions
IEC 60754	Tests on Gases Evolved during Combustion of Materials from Cables
IEC 60695	Fire Hazard Testing
IEC 61034	Measurement of Smoke Density of Cables Burning under Defined Conditions

Clients



.....